

1 PROPRIETARY
THIS DOCUMENT CONTAINS PROPRIETARY INFORMATION. ANY REPRODUCTION, DISCLOSURE, OR USE OF THIS DOCUMENT IS EXPRESSLY PROHIBITED EXCEPT BY WRITTEN AGREEMENT WITH CRITICAL LINK, LLC.

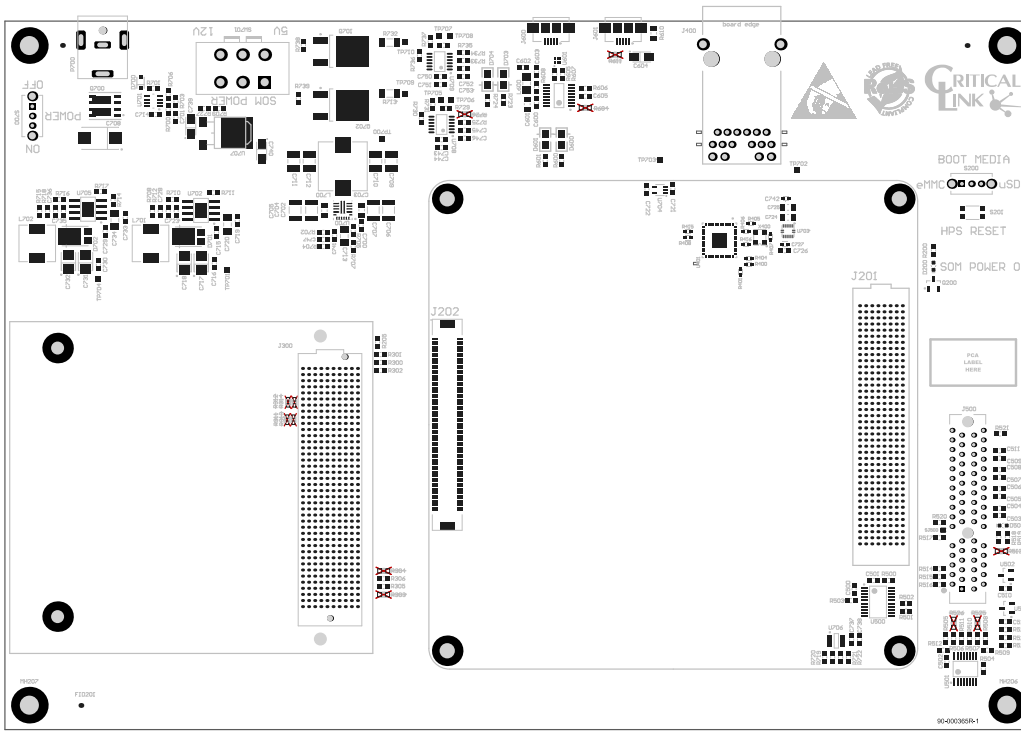
General Notes:


All dimensions are in mils (0.001") unless otherwise specified.
Tolerance on all dimensions shall be ± 0.005 " unless otherwise specified.

Assembly Notes:

1. Assemble board per IPC A-610C Class II.
2. RoHS compliant, Lead-Free solder process required.
3. Assembly shall be with no clean solder paste.

ECR	REV	DESCRIPTION	INITIALS	DATE
1558	A	Initial release.	HL	5/07/18



ENGINEER: K. Connors	TITLE: PCA, MitySOM_A10S Dev Board		 Critical Link, LLC 6712 Brooklawn Pkwy Syracuse, NY 13211 315.425.4045 www.criticallink.com
PCB DESIGNER: Huy Le	PART NO: 80-001127RC-1		
DATE: 5/7/2018	REV: A	SIZE: B	SCALE: SCALE: 0.64
FILE NAME: A10S_DevBoard.PcbDoc	PRINT NAME: Top Assembly Drawing		

