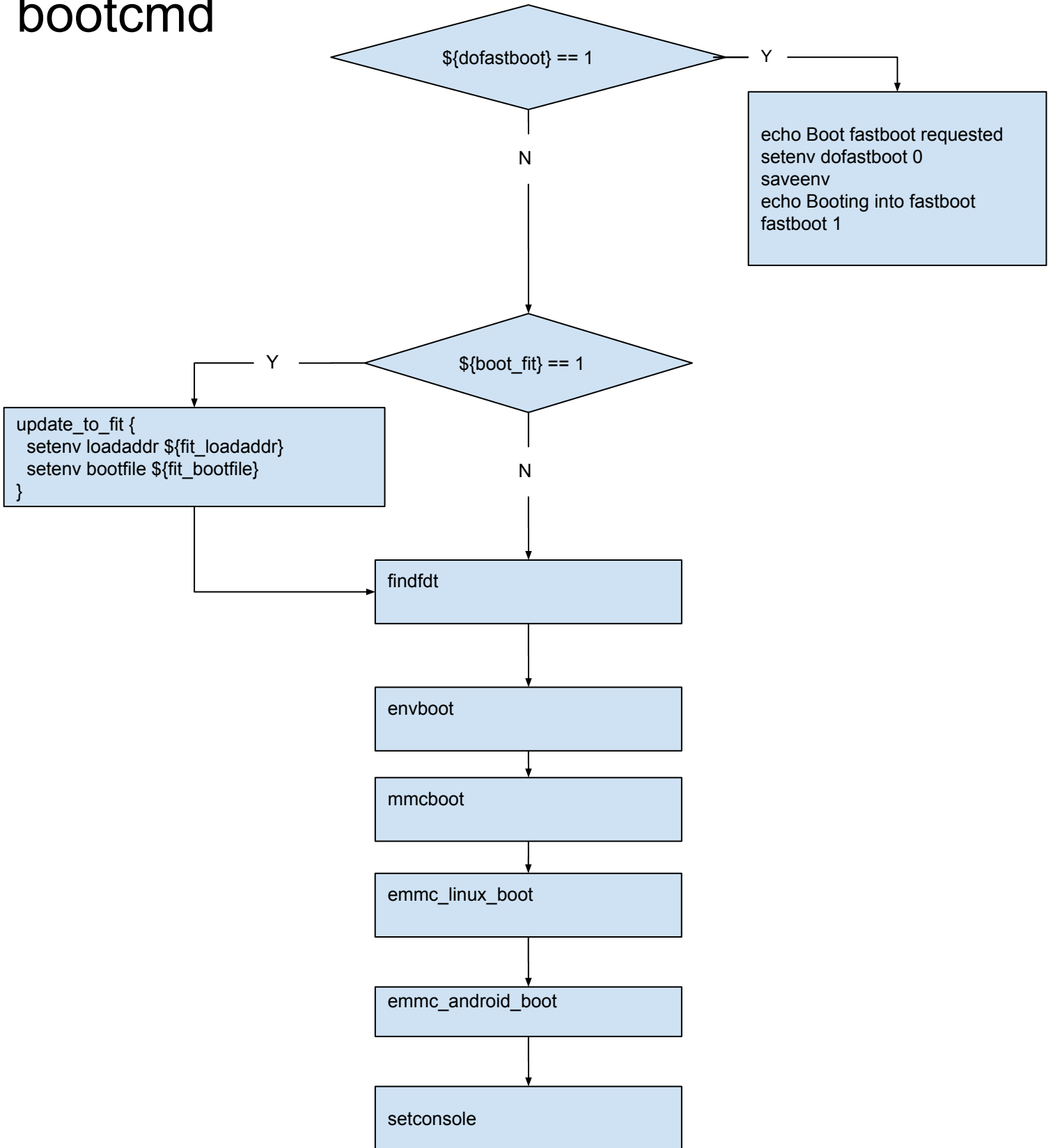
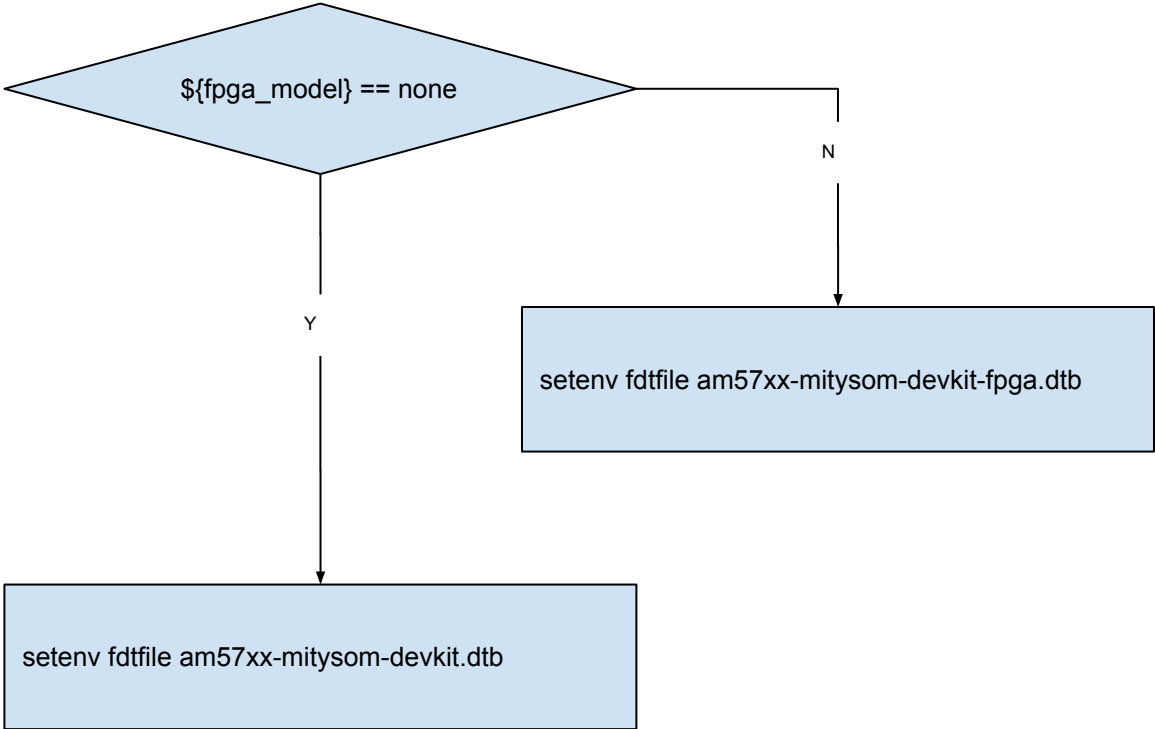


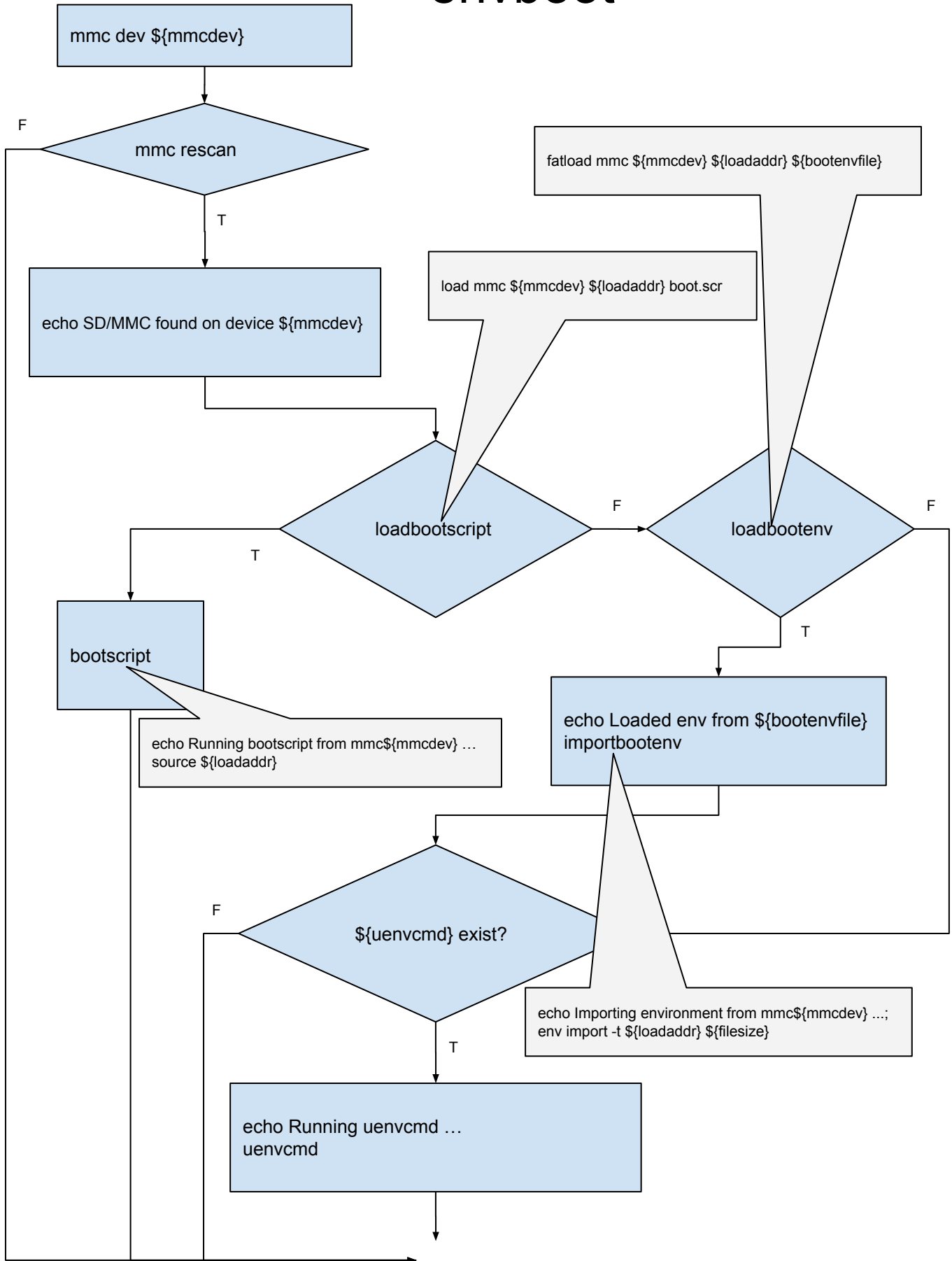
bootcmd



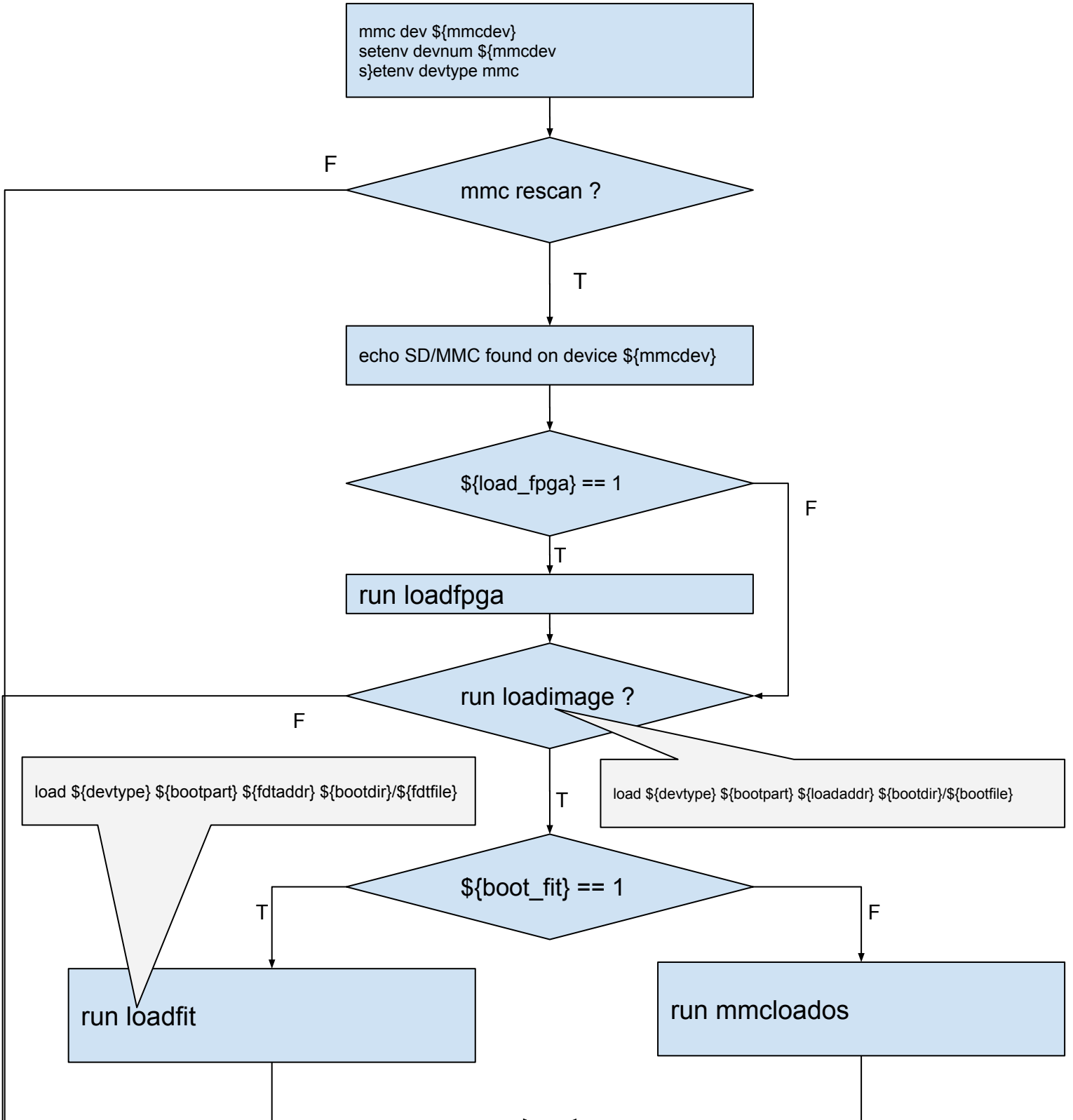
findfdt



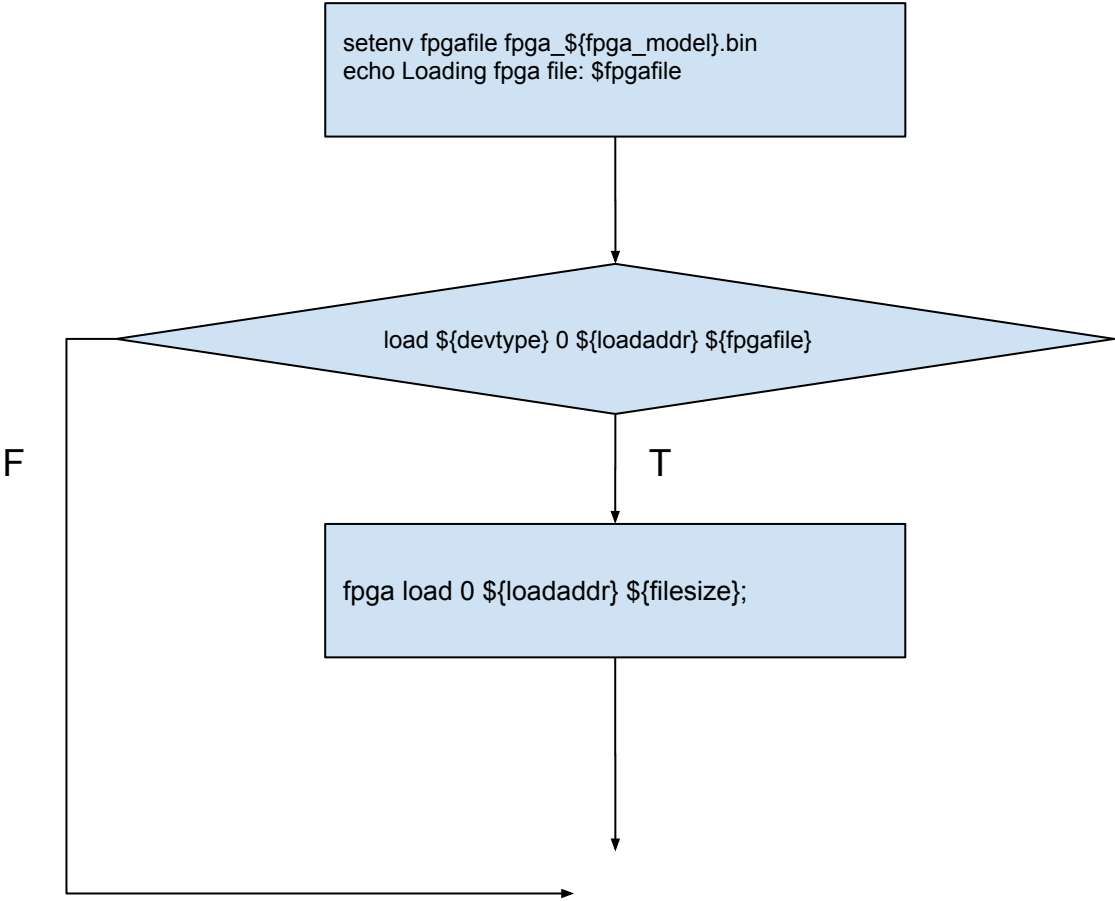
envboot



mmcboot

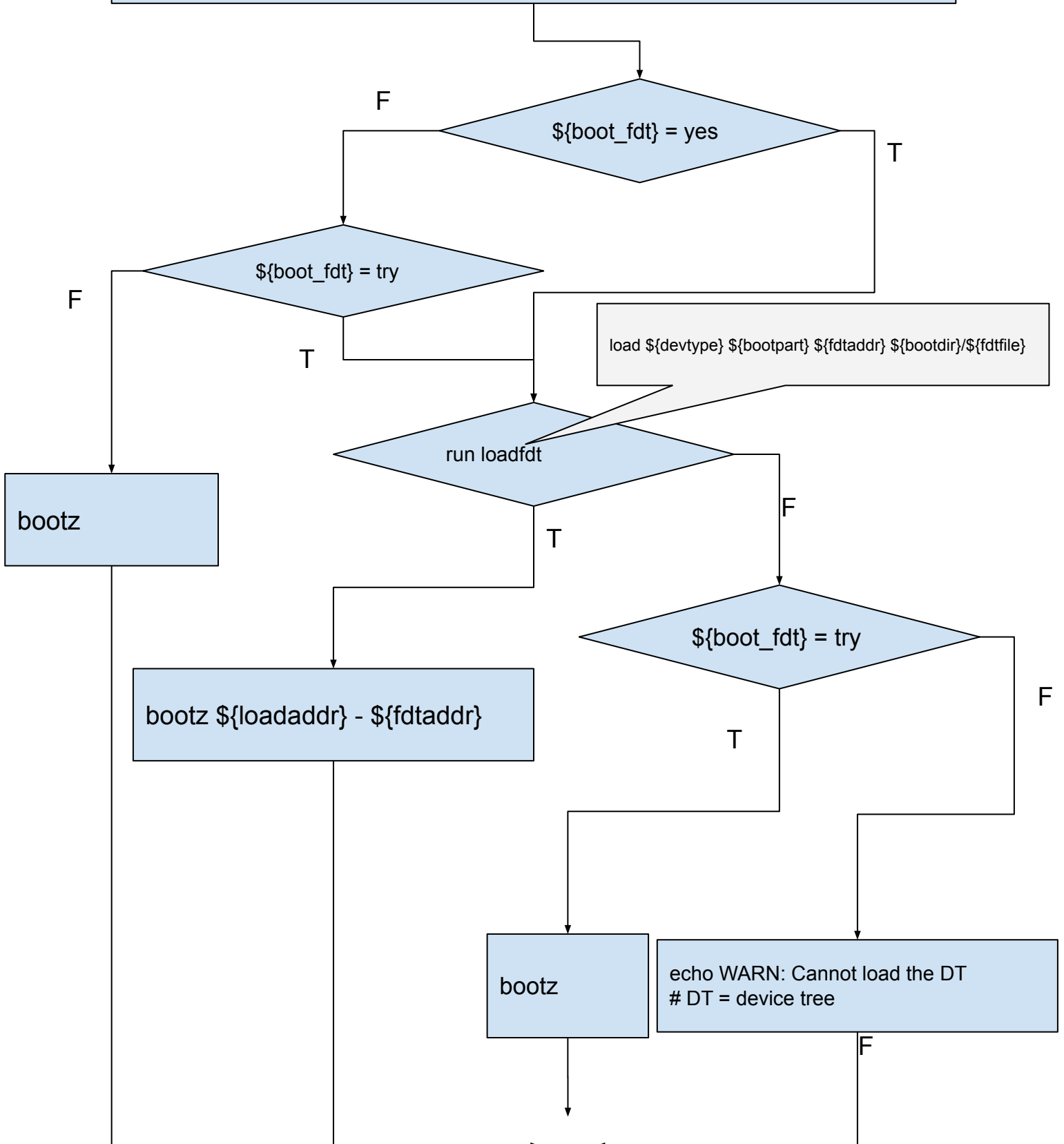


loadfpga



mmclados

```
run args_mmc  
{  
  run finduuid  
  setenv bootargs console=${console} ${optargs} root=PARTUUID=${uuid} rw rootfstype=${mmcrootfstype}  
}
```



emmc_linux_boot

```
echo Trying to boot Linux from eMMC ...  
setenv mmcdev 1  
setenv bootpart 1:2  
setenv mmcroot /dev/mmcbk0p2 rw  
run mmcboot;
```

emmc_android_boot

```
echo Trying to boot Android from eMMC ...
run update_to_fit
setenv eval_bootargs setenv bootargs $bootargs
run eval_bootargs
setenv mmcdev 1
setenv machid fe6
mmc dev $mmcdev
mmc rescan
part start mmc ${mmcdev} boot boot_start
part size mmc ${mmcdev} boot boot_size
mmc read ${loadaddr} ${boot_start} ${boot_size}
bootm ${loadaddr} #${fdtfile};
```


setconsole

